

INDUSTRIAL FOR LEASE

10,000± SF
21,000± SF

RATE NEGOTIABLE

1430 KING ST.
(520 Cswy)
COCOA, FL
32922



BRAND NEW Warehouse/Manufacturing Facility

- Built in 2011!
- Concrete block to 10'
- Steel truss / metal roof
- 16' eave height
- 18" center insulated
- 14 - 12' x 16 OHD
- 45 parking spaces (2 Handicap)
- Currently open shell space - ready to be built-out to your specs.
- 3-phase power available at the pole
- Secure, fenced property

Zoned - BU-2
Brevard County
Warehouse/Distribution/Light Manufacturing



LIGHTLE BECKNER ROBISON
INCORPORATED
COMMERCIAL REAL ESTATE SERVICES

www.TeamLBR.com

Michael C. Moss

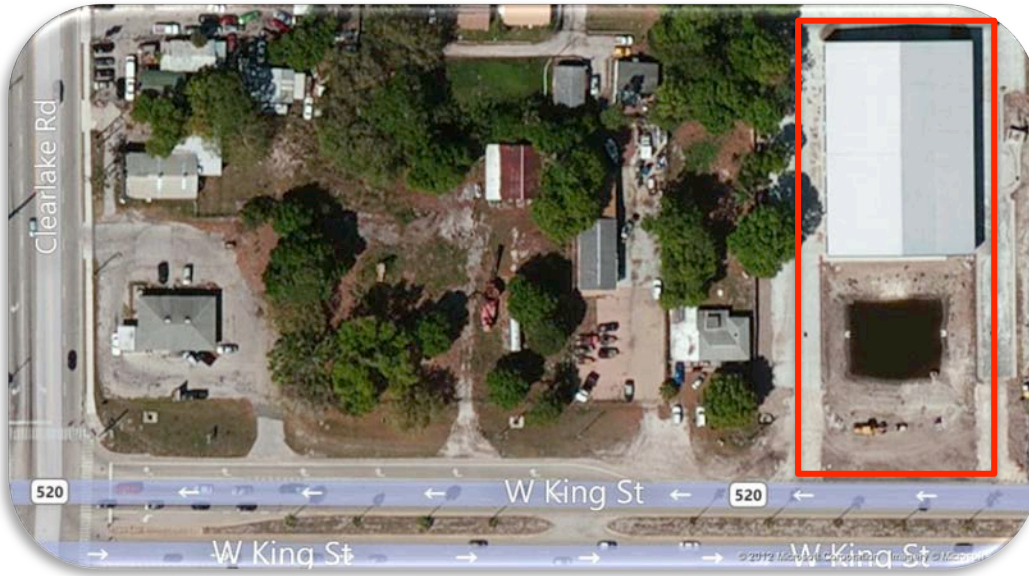
VP Industrial Properties

(321) 722-0707 x12

Mike@TeamLBR.com

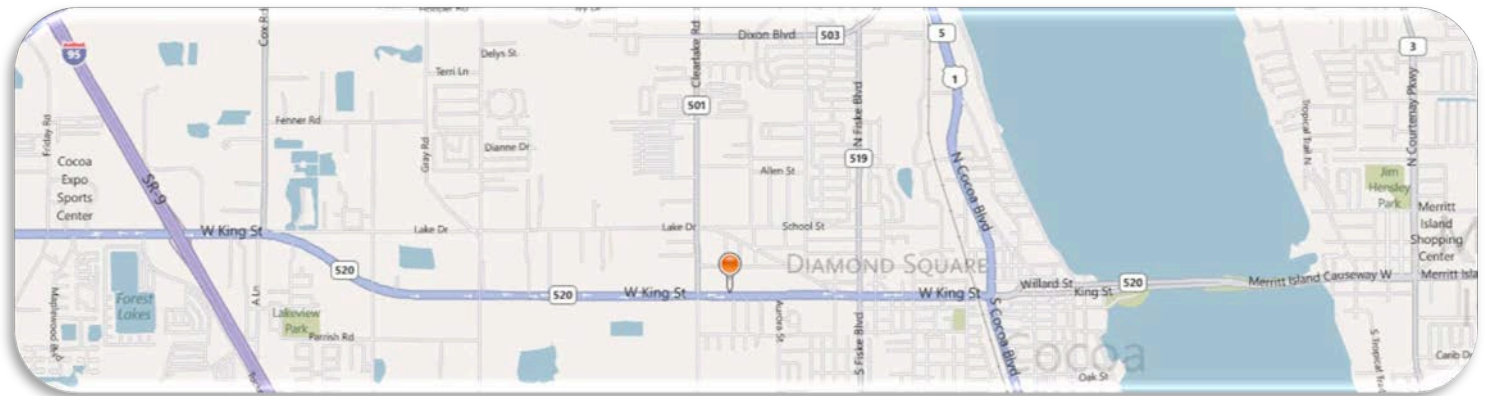
1398 South Babcock Street · Melbourne, Florida 32901 · (321) 722-0581 fax

Information contained herein has been obtained from others and considered to be reliable; However, a purchaser or lessee is expected to verify all information to his/her own satisfaction.



**1430 KING ST.
(520 CSWY.)
COCOA, FL 32922**

**2.5 Miles from I-95
1.5 mile to US 1**



**1430 King Street (520 Cswy)
is located approximately midway between
I-95 and US 1**



LIGHTLE BECKNER ROBISON
INCORPORATED
COMMERCIAL REAL ESTATE SERVICES

www.TeamLBR.com

© Lightle Beckner Robison, Inc.
All Rights Reserved

Michael C. Moss
VP Industrial Properties
(321) 722-0707 x12
Mike@TeamLBR.com

1398 South Babcock Street · Melbourne, Florida 32901 · (321) 722-0581 fax

*Information contained herein has been obtained from others and considered to be reliable;
However, a purchaser or lessee is expected to verify all information to his/her own satisfaction.*